

MediaPlatform for SharePoint

Integration for Microsoft SharePoint

MediaPlatform is an enterprise video platform that enables on-demand video and live rich media webcasting for internal communications. The MediaPlatform integration for Microsoft SharePoint transforms SharePoint's basic media functionality into an engaging internal communications solution with advanced media management features.

MediaPlatform provides a superior video streaming experience for desktops, the web and mobile devices, sophisticated video transcoding, customizable video channels, advanced integrated search, live video streaming and more.

Key Features:

- Secure user access based on viewer permissions
- Easy uploading allows users to add video in any file format. MediaPlatform transcodes multiple output formats to support all browsers and devices
- Superb video playback quality, using Adaptive Bit Rate Streaming technologies and Tier1 CDNs
- Video for mobile devices is fully supported with automated transcoding for iOS, Android and Windows
- Custom Web Parts let users add videos, playlists and channels to any SharePoint page
- Link to SharePoint documents and other files when adding videos
- Social video functionality allows commenting, rating, tagging and sharing
- MediaPlatform SmartPath distribution lets you reach any user, anywhere on any device

Key Benefits

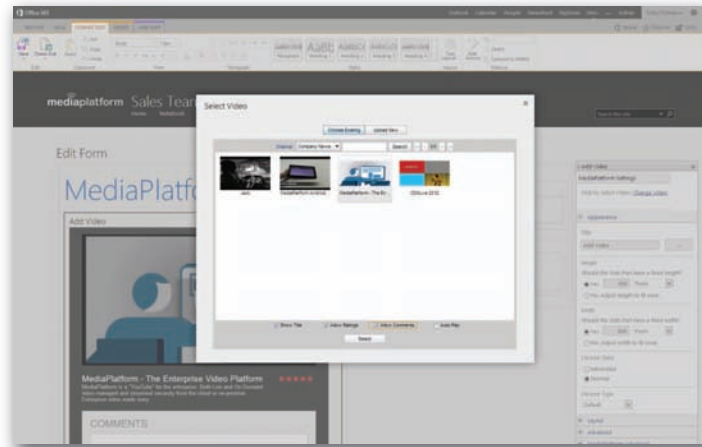


- Centralized Management of All Media
- Drives SharePoint User Adoption and Engagement
- Improves Internal Communications with On-Demand Video and Live Rich Media Webcasting
- Enables Creation of Internal Knowledge Centers
- Files Stored Outside of SharePoint, No Limit on Video Size



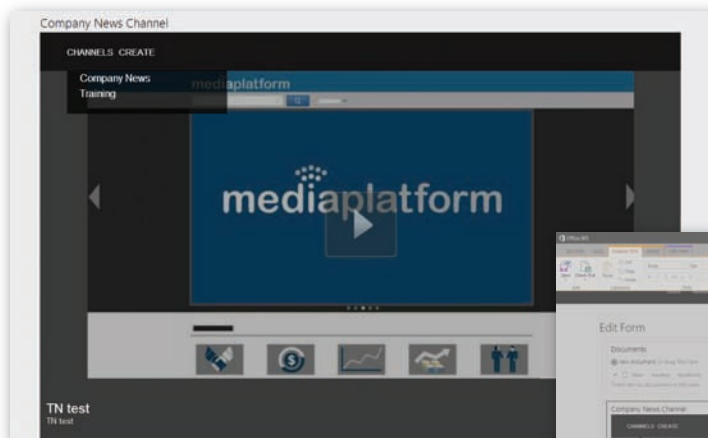
MediaPlatform for SharePoint Close-Up

Users can upload videos directly from the SharePoint user interface and link to other SharePoint content, such as related documents, from the same publishing screen. Users can assign tags, select or generate thumbnails, allow ratings and set permissions. Videos can also be recorded directly from a webcam to capture presentations, sessions and meetings.

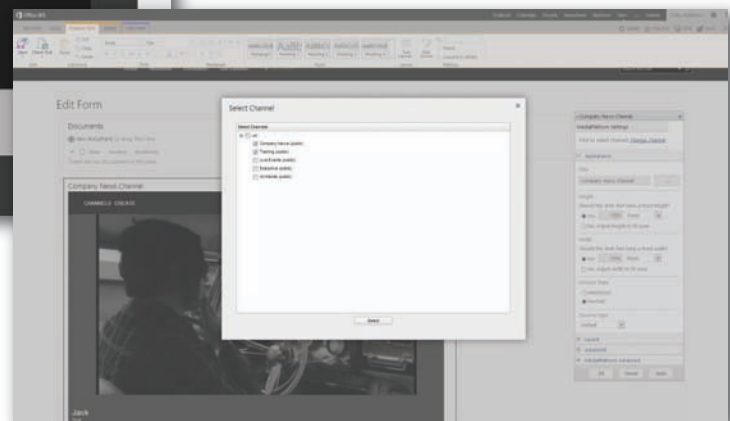


Easy Video Upload

Videos can be added directly to channels created in MediaPlatform and departmental permissions can be set to allow or restrict viewing of content. Individuals can also be given permission to create their own channels for sharing user generated content.



Channel Creation



About MediaPlatform

MediaPlatform is the best-in-class enterprise video platform with on-demand streaming and live rich media webcasting capabilities. MediaPlatform builds community and user engagement with Microsoft SharePoint by enabling executive and employee generated video for corporate communications, training and collaboration.